

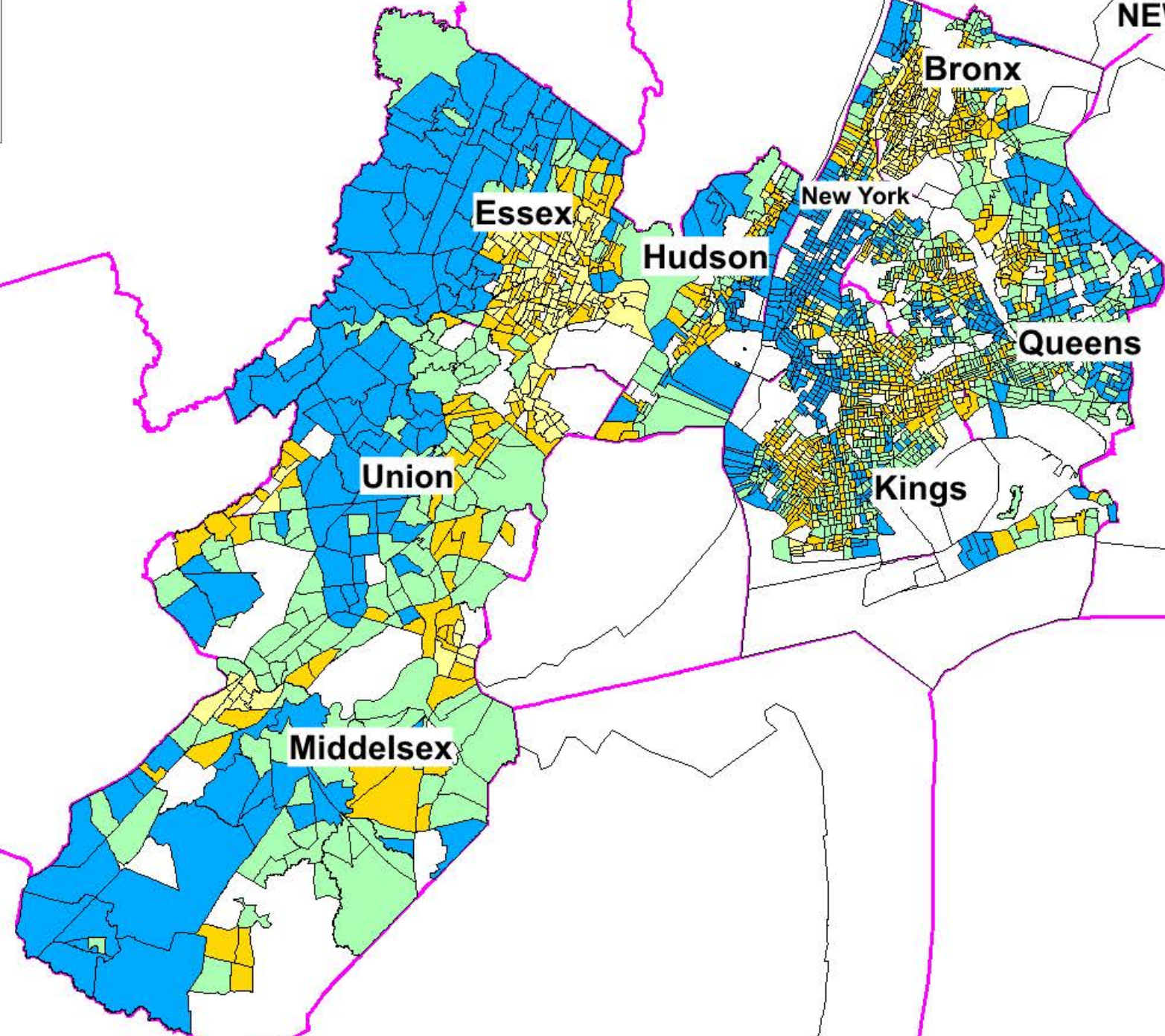
Income as % of MSA Med  
(# of Tracts in Range)

- >=120% (636)
- 80%<120% (790)
- 50%<80% (670)
- 0.01%<50% (362)
- All Others (95)

- County
- State

**NEW JERSEY**

**NEW YORK**



**Bronx**

**Essex**

**New York**

**Hudson**

**Queens**

**Union**

**Kings**

**Middlesex**